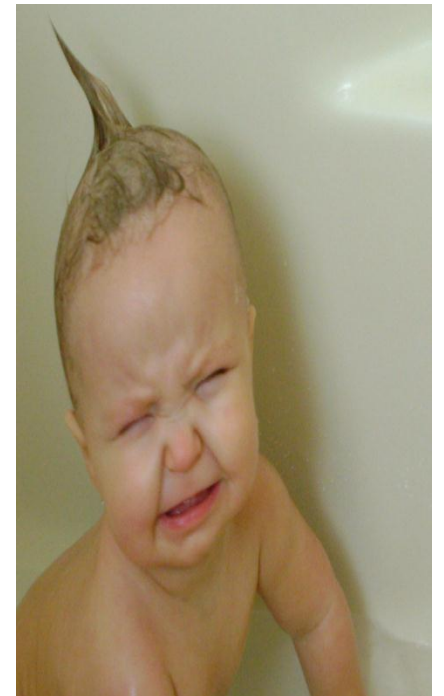
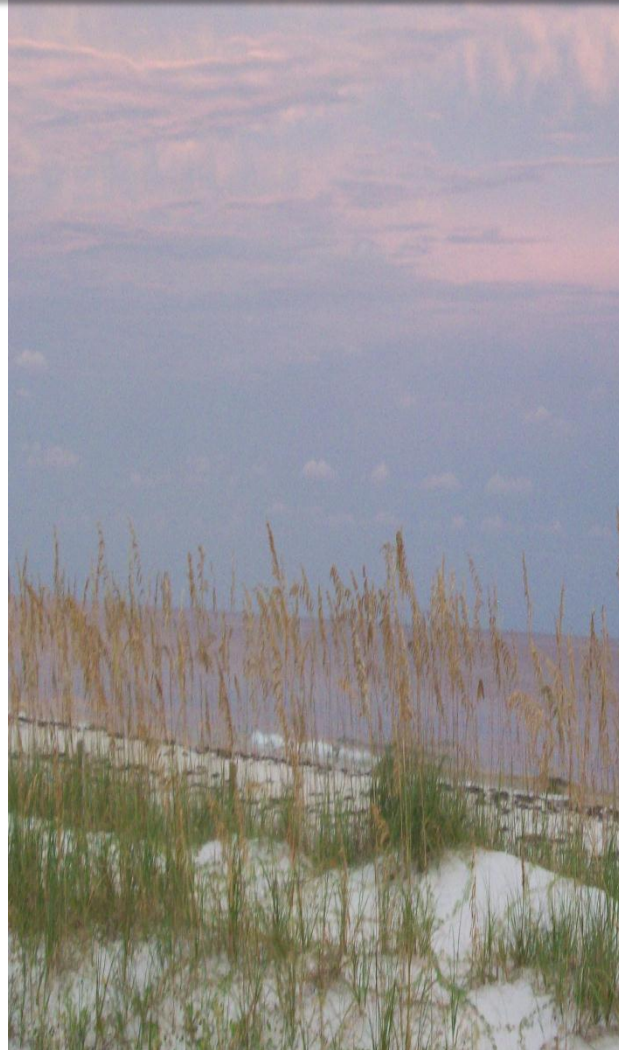


ENVR 110 INTRODUCTION TO ENVIRONMENTAL STUDIES FALL 2013



LOCATION: 5 COMENIUS HALL

TIME: 7.30-8.40, MONDAY AND WEDNESDAY

INSTRUCTOR: REBEKAH BROSKY

OFFICE: 230 COLLIER

OFFICE HOURS: MONDAY AND WEDNESDAY, 8.45-10.15

PHONE: 610-861-1372

EMAIL: REB@MORAVIAN.EDU

REQUIRED COURSE MATERIALS:

WITHGOTT AND BRENNAN, ENVIRONMENT: THE SCIENCE BEHIND THE STORIES, 4TH EDITION, BENJAMIN CUMMINGS: NEW YORK, 2011.

Evaluation:

- 1—two semester exams (15% each-total 30%)
- 2—a cumulative final exam (20%)
- 3—weekly quizzes/periodic assignments (10%)
- 4—major group presentation (15%)
- 5---writing assignment (15%)
- 6---active participation (10%)

Grading Scale:

A (92-100)	C (72-78)
A- (90-92)	C- (70-72)
B+ (88-90)	D+ (68-70)
B (82-88)	D (62-68)
B- (80-82)	D- (60-62)
C+ (78-80)	F (0-60)

Course Description: Introduction to the principles of ecology and the relationship of humans to their environment. Emphasis on scientific, social, philosophical, and economic factors related to global environmental issues. Topics include agriculture and food production, water and air pollution, energy use and its environmental effects, toxic waste, and renewable/nonrenewable resources.

Exams: You must notify me **beforehand** if you need to reschedule an exam. If you do not do so, and do not show-up at the scheduled exam time, you will receive a zero for that exam. **Period.** Moravian College policies regarding academic honesty will be enforced. Please familiarize yourself with the Academic Honesty Policy included in your student handbook.

Test Grading Policy: Tests will consist of short answer, multiple choice/fill-in-the-blank AND essay questions. If a student disagrees with my grading of a particular question, he/she must submit a 'reevaluation request' in writing to me, no longer than one week after the exams have been handed back to you. This request should consist of the following: 1—identify the question in dispute, 2—provide an explanation as to why the question was incorrectly evaluated (in the student's opinion), 3—propose a suggested remedy. I will then review this request carefully and return a written decision to you within a week.

Quizzes/Periodic Assignments: Readings/assignments other than the assigned textbook pages may be distributed in class, posted on Blackboard or placed on reserve (library). I will post the assignment due date along with the assignment (Blackboard) or I will tell you in class if the assignment is distributed in class/reserved in the library. Therefore, please check Blackboard regularly for announcements and assignments. If you miss a class, be sure to check with me or a classmate for any missed assignments. You will **not** be given extra time to complete an assignment, simply because you have missed a class.

In addition, a bi-weekly **quiz or group assignment*** will be given on alternate Wednesdays. It will cover the assigned readings for that particular class, or for that week's Monday class. It will be straightforward and the marks will enhance your final grade immensely.

Group Presentation: There may be either 1) a field trip scheduled or 2) a guest speaker scheduled, sometime in the late Fall. The week after the trip or the guest speaker presents, everyone must choose an environmental topic pertaining to the business/organization from a list which I will distribute. In addition, groups of no more than 4 members must be chosen and you will have several weeks to prepare to make an oral (Powerpoint) presentation on that topic, complete with illustrations. The reports/presentations will be due near the end of the semester.

Writing Assignment: a five-page (double-spaced) essay on either the class activity held on 11/25 or a list of environmental topics distributed in class that day, will be due on the final day of class, **12/9: no exceptions.**

Active Participation: though ENVR110 is primarily a lecture course, there will also be periodic group discussions and group assignments will also be dispensed. Your 'participation' grade will depend upon your contribution to these events, AS WELL AS: attendance at lectures, timeliness with which you submit all work and your general participation in the lectures.

MISCELLANEOUS INFORMATION: THE USE OF CELL PHONES IS NOT PERMITTED IN CLASS.

Accommodation: Should you have any individual concerns regarding disability please discuss this with me during the first week of class in person or via email. In addition, individuals from the counseling center will work with you to verify your need for accommodation and will help determine the environment in which you will have the opportunity to succeed in this course. To this end, students who wish to request accommodations in this class for a disability should contact Ms. Elaine Mara, Assistant Director of Learning Services for Disability Support, 1307 Main Street (ext. 1510). Accommodations cannot be provided until authorization is received from the Office of Learning Services.

COURSE OUTLINE

This schedule is tentative, and may be revised as the semester moves forward. In addition, depending on the background, interests and progress of the class we may cover the material in a different order. As current environmental topics emerge, video and film clips may be introduced in class. The lessons will be a mix of learning environmental concepts, examining current environmental issues and discussing plausible solutions.

8/26 introductions; syllabus review

Assignment: read Chapter 1 'Science and Sustainability...' (incl. 'The Lesson of Easter Island')

8/28 discuss 'The Lesson of Easter Island'; Chapter 1

Assignment: read Chapter 2 'Earth's Physical Systems...' (incl. '...The Geysers of CA')

9/2 *no class-Labor Day Break*

9/4* discuss '...The Geysers of CA'; Chapter 2

Assignment: read Chapter 5 'Environmental Systems...' (incl. 'The Gulf of Mexico's Dead Zone')

9/9 discuss 'The Gulf of Mexico's 'Dead Zone'; Chapter 5

Assignment: read Chapter 6 'Environmental Ethics and Economics...' (incl. 'The Mirrar Clan...' and 'Putting a Price on Nature...'); Blackboard article: Pro-Environmental Behavior in Egypt: Is There a Role for Islamic Environmental Ethics?

9/11 discuss 'The Mirrar Clan...' and 'Putting a Price on Nature...' and Blackboard article; Chapter 6

Assignment: read Chapter 7 'Environmental Policy...' (incl. 'San Diego and Tijuana...' and 'Comparing Costs and Benefits')

9/16 discuss 'San Diego and Tijuana...' and 'Assessing Environmental Impacts...'; Chapter 7

Assignment: read Chapter 8 'Human Population' (incl. 'China's One Child Policy' and 'Fertility Decline in Bangladesh'); Blackboard article: Human Carrying Capacity is Controlled by Food Availability

9/18* discuss 'China's One Child Policy' and 'Fertility Decline in Bangladesh' and Blackboard article; Chapter 8

9/23 review for Test 1

9/25 Test 1

Assignment: read Chapter 10 'Agriculture...' (incl. 'Possible Transgenic Maize...' and 'Does Organic Farming Work?')

9/30 discuss 'Possible Transgenic Maize...' and 'Does Organic Farming Work?'; Chapter 10; discuss possible field trip

10/2* film viewing: Gasland; return Test 1 and discuss

Assignment: read Chapter 12 'Forests...' (incl. 'Certified Sustainable Paper...'); complete assignment pertaining to the film

10/7 discuss 'Certified Sustainable Paper...'; Chapter 12

Assignment: read Chapter 13 'The Urban Environment...' (incl. 'Managing Growth...' and 'Measuring the Impacts of Urban Sprawl'); Blackboard article

10/9 discuss 'Managing Growth...' and 'Measuring the Impacts of Urban Sprawl' and Blackboard article; Chapter 13

Assignment: read Chapter 14 'Environmental Health...' (incl. 'Poison in the Bottle...' and 'Pesticides and Child Development...'); Blackboard article

10/14 no class-Fall Break

10/16 discuss 'Poison in the Bottle...' and 'Pesticides and Child Development...' and Blackboard article; Chapter 14; choice for topics and groups for end-of-semester presentation must be made

Assignment: read Chapter 15 'Freshwater Systems...' (incl. 'Gambling with Water...' and 'Is It Better in the Bottle?')

10/21 discuss 'Gambling with Water...' and 'Is it Better in the Bottle?'; Chapter 15

Assignment: read Chapter 16 'Marine and Costal Systems and Resources' (incl. 'Marine Reserves and 'Coral Reefs and Climate Change')

10/23* discuss 'Marine Reserves and 'Coral Reefs and Climate Change'; Chapter 16

Assignment: read Chapter 17 'Atmospheric Science' (incl. 'LA and its Sister Cities...' and 'Discovering Ozone Depletion...')

10/28 discuss 'LA and its Sister Cities...' and 'Discovering Ozone Depletion...'; Chapter 17; any last field trip arrangements must be finalised

Assignment: read Chapter 18 'Global Climate Change' (incl. 'Rising Seas...' and 'Timing Greenland's Glaciers...'); Blackboard article

10/30 discuss 'Rising Seas...' and 'Timing Greenland's Glaciers...' and Blackboard article; Chapter 18

Assignment: read Chapter 20 'Conventional Energy Alternatives' (incl. 'Sweden's Search...' and 'Health Impacts...')

11/4 discuss 'Sweden's Search...' and 'Health Impacts...'; Chapter 20

Assignment: read Chapter 21 'New Renewable Energy Alternatives' (incl. 'Germany Goes Solar' and 'Prospecting for Wind...') and Chapter 22 'Managing Our Waste' (incl. 'Transforming New York's...' and 'Testing the Toxicity...')

11/6* discuss 'Transforming New York's...' and 'Testing the Toxicity...'; Chapters 21 and 22

11/11 review for Test 2

11/13 Test 2

Assignment: read Chapter 23 'Minerals and Mining' (incl. 'Mining for...' and 'Using Bacteria...')

11/18 discuss 'Mining for...' and 'Using Bacteria...'; Chapter 23

Assignment: read Chapter 24 'Sustainable Solutions' (incl. 'De Anza College...' and 'Rating the Environmental Performance...'); Blackboard article

11/20* discuss 'De Anza College...' and 'Rating the Environmental Performance...' and Blackboard article; Chapter 24; return Test 2 and discuss

11/25 class activity: an essay pertaining to either this class activity, or another environmental topic from a list distributed in class today, will be due on 12/9 the final day of class

11/27 no class-Thanksgiving Break

12/2 oral presentations commence

12/4* oral presentations continue (if no oral presentations, then there will be an additional 'special topic' scheduled)

12/9 final oral presentations; ESSAY due; review for final exam