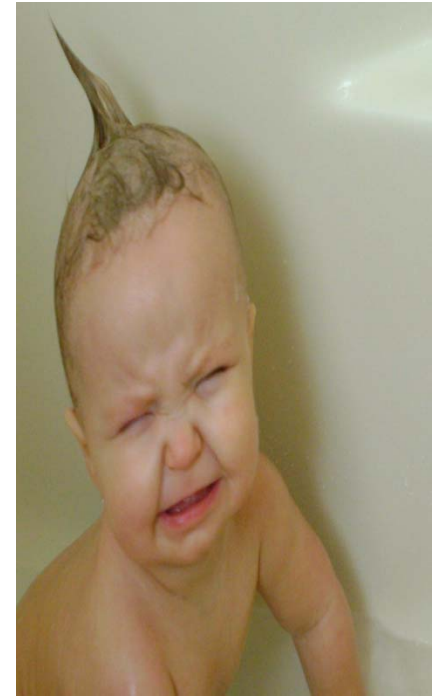
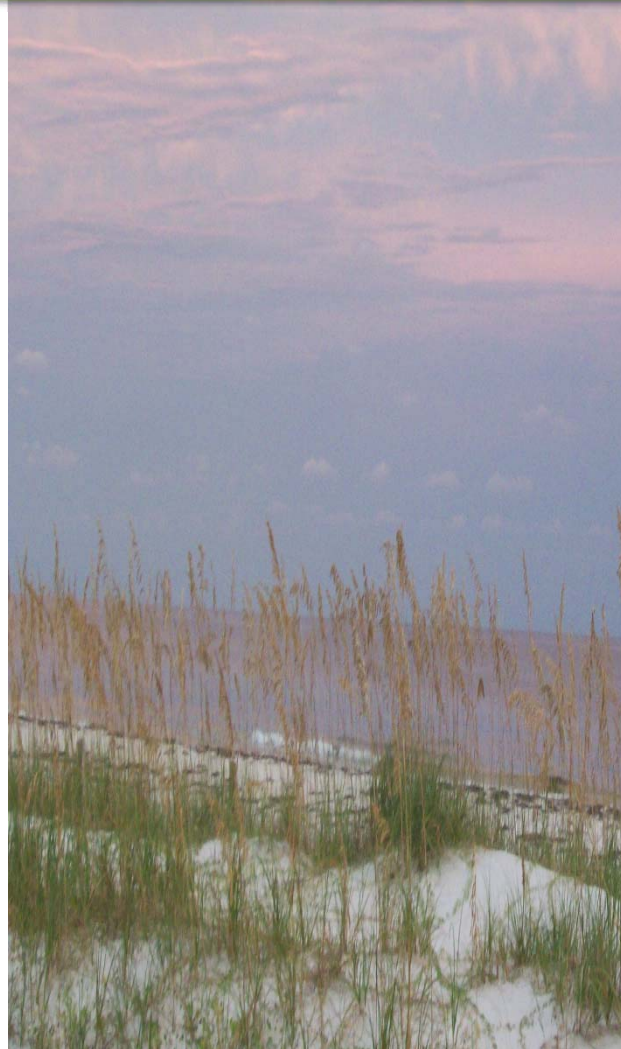


ENVR 110 INTRODUCTION TO ENVIRONMENTAL STUDIES

FALL 2012



LOCATION: 202 COLLIER

TIME: 2.35-3.45, T AND TH

INSTRUCTOR: REBEKAH BROSKY

OFFICE: 230 COLLIER

OFFICE HOURS: T, TH 1.30-2.25; TH 4.00-5.00

PHONE: 610-861-1372

EMAIL: REB@MORAVIAN.EDU

REQUIRED COURSE MATERIALS:

WITHGOTT AND BRENNAN, ENVIRONMENT: THE SCIENCE BEHIND THE STORIES, 4TH EDITION, BENJAMIN CUMMINGS: NEW YORK, 2011.

Evaluation:

1—two semester exams (15% each-total 30%)

2—a cumulative final exam (25%)

3—weekly quizzes/periodic assignments (15%)

4—major group presentation (20%)

5—class participation (10%)

Grading Scale:

A (92-100) C (72-78)

A- (90-92) C- (70-72)

B+ (88-90) D+ (68-70)

B (82-88) D (62-68)

B- (80-82) D- (60-62)

C+ (78-80) F (0-60)

Exams: You must notify me **BEFOREHAND** if you need to reschedule an exam. If you do not do so, and do not show-up at the scheduled exam time, you will receive a zero for that exam. **Period.** Moravian College policies regarding academic honesty will be enforced. Please familiarize yourself with the Academic Honesty Policy included in your student handbook.

Weekly Quizzes/Periodic Assignments: Readings/assignments other than the assigned textbook pages may be distributed in class, posted on Blackboard or placed on reserve (library). I will post the assignment due date along with the assignment (Blackboard) or I will tell you in class if the assignment is distributed in class/reserved in the library. Therefore, please check Blackboard regularly for announcements and assignments. If you miss a class, be sure to check with me or a classmate for any missed assignments. You will not be given extra time to complete an assignment, simply because you have missed a class.

In addition, a **bi-weekly quiz*** will be given on alternate Thursdays at the beginning of class. It will cover the assigned readings for that particular class, or for that week's Tuesday class. It will be straightforward and the quiz marks will enhance your final grade immensely.

Group Presentation: There may be either 1) a field trip scheduled or 2) a guest speaker scheduled, sometime in the late Fall. I will hand-out information about the place/person what/whom will be making a presentation. The week after the trip or the guest speaker presents, everyone must choose an environmental topic pertaining to the business/organization from a list which I will distribute. In addition, groups of no more than 4 members must be chosen and you will have several weeks to prepare to make an oral (Powerpoint) presentation on that topic, complete with illustrations. The reports/presentations will be due near the end of the semester. Alternatively, if we do not have a field trip or a guest speaker then I will hand-out a list of environmental topics and your report will be chosen from the topics on that list.

Class Participation: You will also be evaluated on your participation in group discussions, your attendance record and the timeliness with which you hand in your assignments.

MISCELLANEOUS INFORMATION: THE USE OF CELL PHONES IS NOT PERMITTED IN CLASS.

Test Grading Policy: Tests will consist of short answer, multiple choice/fill-in-the-blank, essay questions. If a student disagrees with my grading of a particular question, he/she must submit a 'reevaluation request' **IN WRITING TO ME, NO LONGER THAN ONE WEEK AFTER THE EXAMS HAVE BEEN HANDED BACK TO YOU.** This request should consist of the following: 1—identify the question in dispute, 2—provide an explanation as to why the question was incorrectly evaluated (in the student's opinion), 3—propose a suggested remedy. I will then review this request carefully and return a written decision to you within a week.

Accommodation: Should you have any individual concerns regarding disability please discuss this with me during the first week of class in person or via email. In addition, individuals from the counseling center will work with you to verify your need for accommodation and will help determine the environment in which you will have the opportunity to succeed in this course. To this end, students who wish to request accommodations in this class for a disability should contact Mr. Joe Kempfer, Assistant Director of Learning Services for Disability Support, 1307 Main Street (ext. 1510). Accommodations cannot be provided until authorization is received from the Office of Learning Services.

COURSE OUTLINE

This schedule is tentative, and may be revised as the semester moves forward. In addition, depending on the background, interests and progress of the class we may cover the material in a different order. As current environmental topics emerge, video and film clips may be introduced in class. The lessons will be a mix of learning environmental concepts, examining environmental issues and discussing plausible solutions.

8/28 introductions; syllabus review

Assignment: read **CHAPTER 1 'SCIENCE AND SUSTAINABILITY...'** (incl. 'The Lesson of Easter Island')

8/30 discuss 'The Lesson of Easter Island'; Chapter 1

Assignment: read **CHAPTER 2 'EARTH'S PHYSICAL SYSTEMS...'** (incl. '...The Geysers of CA')

9/4 discuss '...The Geysers of CA'; Chapter 2

Assignment: read **CHAPTER 5 'ENVIRONMENTAL SYSTEMS...'** (incl. 'The Gulf of Mexico's Dead Zone')

9/6* discuss 'The Gulf of Mexico's 'Dead Zone'; Chapter 5

Assignment: read **CHAPTER 6 'ENVIRONMENTAL ETHICS AND ECONOMICS...'** (incl. 'The Mirrar Clan...' and 'Putting a Price on Nature...'); read hand-outs

9/11 discuss 'The Mirrar Clan...' and 'Putting a Price on Nature...' and hand-outs; Chapter 6

Assignment: read **CHAPTER 7 'ENVIRONMENTAL POLICY...'** (incl. 'San Diego and Tijuana...' and 'Comparing Costs and Benefits'); read hand-outs

9/13 discuss 'San Diego and Tijuana...' and 'Comparing Costs and Benefits...' and hand-outs; Chapter 7

Assignment: read **CHAPTER 8 'HUMAN POPULATION'** (incl. 'China's One Child Policy' and 'Fertility Decline in Bangladesh'); read hand-outs

9/18 discuss 'China's One Child Policy' and 'Fertility Decline in Bangladesh' and hand-outs; Chapter 8

9/20* review for Test 1; film viewing Green Fire 7.00PM UBC Room

9/25 Test 1

Assignment: read **CHAPTER 10 'AGRICULTURE...'** (incl. 'Possible Transgenic Maize...' and 'Does Organic Farming Work?'); read hand-outs

9/27 discuss 'Possible Transgenic Maize...' and 'Does Organic Farming Work?' and hand-outs; Chapter 10; discuss possible field trip

Assignment: read **CHAPTER 11 'BIODIVERSITY...'** (incl. 'Saving Siberian Tiger' and 'Using Forensics to Uncover Illegal Whaling'); read hand-outs

- 10/2 film viewing: Fresh; return Test 1 and discuss
- Assignment: read **CHAPTER 12 'FORESTS...'** (incl. 'Certified Sustainable Paper...'); read hand-outs; complete assignment pertaining to the film
- 10/4* discuss 'Certified Sustainable Paper...' and hand-outs; Chapter 12
- Assignment: read **CHAPTER 13 'THE URBAN ENVIRONMENT...'** (incl. 'Managing Growth...' and 'Measuring the Impacts of Urban Sprawl'); read hand-outs
- 10/11 discuss 'Managing Growth...' and 'Measuring the Impacts of Urban Sprawl' and hand-outs; Chapter 13; film viewing Living Downstream 7.00PM UBC Room
- Assignment: read **CHAPTER 14 'ENVIRONMENTAL HEALTH...'** (incl. 'Poison in the Bottle...' and 'Pesticides and Child Development...'); read hand-outs
- 10/16 discuss 'Poison in the Bottle...' and 'Pesticides and Child Development...' and hand-outs; Chapter 14; choice for topics and groups for end-of-semester presentation must be made
- Assignment: read **CHAPTER 15 'FRESHWATER SYSTEMS...'** (incl. 'Gambling with Water...' and 'Is It Better in the Bottle?'); read hand-outs
- 10/18* discuss 'Gambling with Water...' and 'Is it Better in the Bottle?' and hand-outs; Chapter 15
- Assignment: read **CHAPTER 17 'ATMOSPHERIC SCIENCE'** (incl. 'LA and its Sister Cities...' and 'Discovering Ozone Depletion...')
- 10/23 discuss 'LA and its Sister Cities...' and 'Discovering Ozone Depletion...'; Chapter 17; any last field trip arrangements must be finalised
- Assignment: read **CHAPTER 18 'GLOBAL CLIMATE CHANGE'** (incl. 'Rising Seas...' and 'Timing Greenland's Glaciers...'); read hand-outs
- 10/25 discuss 'Rising Seas...' and 'Timing Greenland's Glaciers...' and hand-outs; Chapter 18
- Assignment: read **CHAPTER 20 'CONVENTIONAL ENERGY ALTERNATIVES'** (incl. 'Sweden's Search...' and 'Health Impacts...'); read hand-outs
- 10/30 discuss 'Sweden's Search...' and 'Health Impacts...' and hand-outs; Chapter 20
- Assignment: read **CHAPTER 21 'NEW RENEWABLE ENERGY ALTERNATIVES'** (incl. 'Germany Goes Solar' and 'Prospecting for Wind...'); read hand-outs
- 11/1* review for Test 2
- 11/6 *Test 2*
- Assignment: read **CHAPTER 22 'MANAGING OUR WASTE'** (incl. 'Transforming New York's...' and 'Testing the Toxicity...'); read hand-outs; complete assignment pertaining to the film
- 11/8 discuss 'Transforming New York's...' and 'Testing the Toxicity...' and hand-outs; Chapter 22

Assignment: read **CHAPTER 23 'MINERALS AND MINING'** (incl. 'Mining for...' and 'Using Bacteria...'); read hand-outs

11/13 discuss 'Mining for...' and 'Using Bacteria...' and hand-outs; Chapter 23; return Test 2 and discuss

Assignment: read **CHAPTER 24 'SUSTAINABLE SOLUTIONS'** (incl. 'De Anza College...' and 'Rating the Environmental Performance...'); read hand-outs

11/15* discuss 'De Anza College...' and 'Rating the Environmental Performance...' and hand-outs; Chapter 24

11/20 **NO CLASS**

11/27 class activity

11/29* oral presentations (if no oral presentations, then there will be an additional 'special topic' scheduled)

12/4 oral presentations continue (if no oral presentations, then there will be an additional 'special topic' scheduled)

12/6 final oral presentations; class activity essay due; review for final exam