

MORAVIAN COLLEGE

Music Department[moravian home](#) [music home](#) [history](#) [links](#) [contact](#)[music degrees](#)[prospective students](#)[faculty & staff](#)[choral](#)[instrumental](#)[chamber ensembles](#)[orchestra](#)[contemp. ensemble](#)[jazz group](#)[marching band](#)[pop band](#)[wind ensemble](#)[delta omicron](#)[news & events](#)[music alliance](#)[music alumni](#)[music institute](#)[july jazz getaway](#)[guitar festival](#)[summer youth jazz camp](#)

MARCHING BAND & COLOR GUARD

INFORMATION (MUS 006 & MUS 016)

[Fall 2006 Schedule-Firm](#)[Band Camp 2006 Schedule](#)[2006 Music](#) (template for arrangers)[Frequently asked questions](#) about the 2006 ensemble and Band Camp for new and returning students[Attendance and grading](#) for non-majors and music majors

•

[Officers and Staff](#)[Uniform page](#) - including measurement charts[Learn to march](#) at the marching techniques page[Our Constitution in PDF format!](#) (updated 2006)

•

IMAGES

[The 05 Band](#) (to be re-posted)[The 04 Bethlehem Parade](#)• [and 04 general Band shots](#)[The 2003 Band Photo Index](#)[The 2002 Band Photo Index](#)[The 2001 Band](#)[The 2000 Band](#)[The 2000 Fall Rehearsals](#)[The 1932 Band](#)[The 1930 Band](#)[The 1928 Band](#)[The 1926 Band](#)

CONTACT INFORMATION

James Barnes, Director of Instrumental Music

Moravian College

1200 Main Street

Bethlehem, PA 18018

610-861-1672 (voice)

e-mail: barnesj@moravian.edu

Band Office numbers

610-861-1637 (voice)

610-861-1657 (FAX)

music@moravian.edu

MORAVIAN COLLEGE

Music Department[moravian home](#) [music home](#) [history](#) [links](#) [contact](#)[music degrees](#)[prospective students](#)[faculty & staff](#)[choral](#)[instrumental](#)[chamber ensembles](#)[orchestra](#)[contemp. ensemble](#)[jazz group](#)[marching band](#)[pop band](#)[wind ensemble](#)[delta omicron](#)[news & events](#)[music alliance](#)[music alumni](#)[music institute](#)[july jazz getaway](#)[guitar festival](#)[summer youth jazz camp](#)

MARCHING BAND & COLOR GUARD SCHEDULE

FALL 2006 SCHEDULE

Band music and final information was mailed July 28th. If you do not receive this by Aug 7, please call Mr. B at 610-861-1672 or the Music office 610-861-1650.

BAND CAMP 2006:

(Staff ONLY - Sat, Aug 19)

Sunday, August 20

1-4 PM FULL BAND Check-in (commuters may check-in at 3 PM)

5 PM Dinner in the HUB

6:30 PM first rehearsal in Foy

Mon-Fri, Aug 21-25

9 AM - 9 PM Mon-Thurs, Aug 21-24 Rehearsals

Begin 9AM Friday, Aug 25 - First-year students dismissed for Orientation Activities in early afternoon - others rehearse to 9 PM

MINI BAND CAMP:

10 AM - 5 PM Sat, Sept 2 full band

1 - 5 PM Sun, Sept 3 full band

10 AM - 5 PM Mon, Sept 4 full band

REHEARSALS DURING CLASSES:

Every Tues and Thurs 4 PM to 6 PM

Every Sat 10 AM on home game days

PERFORMANCES (NOTE HS EXHIBITIONS):

Sat, Sept 16- 10 AM Rehearsal, 1 PM game

Sat, Sept 30 - 10 AM Rehearsal, 1 PM game

(Sun, Oct 1 - Exhibition CANCELLED)

Sat, Oct 14 - 10 AM Rehearsal, 1 PM game

Sat, Oct 28 - 10 AM Rehearsal, 1 PM game

Thurs, Oct 19 leave 6 PM for 7 - HS exhibition, Phillipsburg, NJ

Sun, Oct 29- 1 PM Leave for 2 PM Bethlehem Community Parade

Sat, Nov 11 - 10 AM Rehearsal, 1 PM game

Thurs, Nov 16 - 4-6 PM Band Dinner

music@moravian.edu

MORAVIAN COLLEGE

Music Department[moravian home](#) [music home](#) [history](#) [links](#) [contact](#)[music degrees](#)[prospective students](#)[faculty & staff](#)[choral](#)[instrumental](#)[chamber ensembles](#)[orchestra](#)[contemp. ensemble](#)[jazz group](#)[marching band](#)[pop band](#)[wind ensemble](#)[delta omicron](#)[news & events](#)[music alliance](#)[music alumni](#)[music institute](#)[july jazz getaway](#)[guitar festival](#)[summer youth jazz camp](#)

BAND CAMP SCHEDULE FALL 2006

MORAVIAN COLLEGE MARCHING BAND & COLOR GUARD (ACCOMMODATES THE FIRST YEAR ORIENTATION ACTIVITIES)

[Saturday evening, Aug 19 Staff check-in, dinner, and meeting ONLY]

Sunday, August 20

1:00 PM - 4:00 PM Band & Color Guard check-in on Hurd Campus

5:00 PM - 6:00 PM Dinner

6:30 PM - 9:00 PM Rehearsals on Hurd Campus

Monday-Thursday, August 21-24

8 AM - 8:45 AM Breakfast in Hauptert Union Building on Main Street Campus

9 AM - 12 PM Rehearsals on Hurd Campus

12 PM - 1 PM Lunch on Main Street Campus

1 PM - 5 PM Rehearsals on Hurd Campus

5 PM - 6:30 PM Dinner on Main Street Campus

6:45 PM - 9 PM Rehearsals on Hurd Campus

Friday, August 25

8 AM - 8:45 AM Breakfast in Hauptert Union Building

9 AM - 12 PM Rehearsals on Hurd Campus

12 PM - 1 PM Lunch on Main Street Campus

1 PM - 4:30 PM Rehearsals on Hurd Campus (1st-year students leave in the afternoon for Orientation Activities)

5 PM - 6:30 PM Dinner on Main Street Campus

6:45 PM - 9 PM **Soph, Jr, and Sr** rehearsal on Hurd Campus

Saturday and Sunday, August 26 and 27

FIRST YEAR Students report to First-Year Orientation Activities

RETURNING Students free

FULL BAND MINI-CAMP - LABOR DAY WEEKEND

Sat, Sun, Mon - Sept 2, 3, and 4

Sat: 10 AM to 5 PM FULL BAND and COLOR GUARD on Hurd Campus

Sun: 1 PM - 5 PM FULL BAND and COLOR GUARD on Hurd Campus

Mon: 10 AM - 5 PM FULL BAND and COLOR GUARD on Hurd Campus

music@moravian.edu

MORAVIAN COLLEGE

Music Department[moravian home](#) [music home](#) [history](#) [links](#) [contact](#)[music degrees](#)[prospective students](#)[faculty & staff](#)[choral](#)[instrumental](#)[chamber ensembles](#)[orchestra](#)[contemp. ensemble](#)[jazz group](#)[marching band](#)[pop band](#)[wind ensemble](#)[delta omicron](#)[news & events](#)[music alliance](#)[music alumni](#)[music institute](#)[july jazz getaway](#)[guitar festival](#)[summer youth jazz camp](#)

2006 MUSIC PDFS OF SCORES PARTS MIDI FILES

If a link is inactive, the music is not available.

- **Pre-game TBA**
[Template for arrangers](#) (pdf)
[Music Map or Storyboard](#) (pdf)
 Student Show #1 (distributed at Band Camp)
 Student Show #2 (distributed at Band Camp)
 Stand Music (distributed at Band Camp)

The following are only accessible on campus!

[Superstar Band Dance](#) in QuickTime (1.9 MB)

[Open Up Wide Drill](#) in QuickTime (3.3 MB)

[Riverdance Drill](#) in QuickTime including the violin/drum insert (10.6 MB)

Note: M.71 through m.86 the guard and drumline move on each step, while the rest of the band moves in halftime ONLY on the first beat of each measure. From m.103 through m.108 everyone moves in halftime ONLY on the first beat of each measure.

Download Quicktime [For Mac](#) or download [For Windows](#)

music@moravian.edu

MORAVIAN COLLEGE

Music Department[moravian home](#) [music home](#) [history](#) [links](#) [contact](#)[music degrees](#)[prospective students](#)[faculty & staff](#)[choral](#)[instrumental](#)[chamber ensembles](#)[orchestra](#)[contemp. ensemble](#)[jazz group](#)[marching band](#)[pop band](#)[wind ensemble](#)[delta omicron](#)[news & events](#)[music alliance](#)[music alumni](#)[music institute](#)[july jazz getaway](#)[guitar festival](#)[summer youth jazz camp](#)

FREQUENTLY ASKED QUESTIONS

[When is Band Camp?](#)[How much time does marching band take once the fall term starts?](#)[Is there a Band Camp?](#)[Do I have to be a music major to be in the band?](#)[Is band a class?](#)[When do I audition for the marching band?](#)[I am afraid about making the transition from high school to college. Would being in the band hurt my grades? Should I wait a year?](#)[I'm a commuter. How does that work?](#)[What does it cost?](#)[What is the attendance policy?](#)[When is the marching band season?](#)[What should I bring?](#)[What about moving into the dorms?](#)[Where can my family find this information when I'm at Moravian College?](#)[How can I call home the first night of Band Camp?](#)[Who can I contact about Band Camp?](#)

RETURNING STUDENT FAQs (GOOD THINGS FOR NEW STUDENTS, TOO!)

[I'm on the residence staff and we have training during Band Camp.](#)[I work during rehearsals and Saturdays. What can I do?](#)[Can my significant other sit with us in the stands?](#)[Do I need anything from last year?](#)[I need to leave early from the game or have a conflict. What should I do?](#)[What about eating food while in uniform?](#)[I'm also in Women's Chorus on Tuesdays. What should I do?](#)[I'm confused. Who's "required" to be in Marching Band & Color Guard?](#)[Do I still have an instrument locker?](#)

WHEN IS BAND CAMP?

Band Camp is from Sunday, August 20 to Friday, August 25, 2006. Band & Color Guard check-in is between 1 PM and 4 PM, Sunday, August 20.

HOW MUCH TIME DOES MARCHING BAND TAKE ONCE THE FALL TERM STARTS?

Less time than you think. After Band Camp, the Greyhound Marching Band & Color Guard rehearses 4 hours per week. During the semester, rehearsals are Tuesdays and Thursdays 4 to 6 PM and Saturdays of game days from 10 till the end of the game. As you can see on the schedule page, we do NOT perform every weekend. We perform for 5-6 football games, 2-3 high school exhibitions, the College homecoming parade, and a community parade.

IS THERE A BAND CAMP?

Yes! Band Camp is held on campus the week prior to the start of school. Resident students may move into their assigned dorm rooms for band camp. [Click here for the Band Camp Schedule.](#)

DO I HAVE TO BE A MUSIC MAJOR TO BE IN THE BAND?

No, you do not! And there are no auditions! The memberships of all Moravian

College ensembles include students from virtually every major in the college. Music majors make up approximately one-third to one-half of the total band membership.

IS BAND A CLASS?

Yes it is. For music minors and other non-music majors, credit is given for membership in major ensembles, including Marching Band (fall term only), Wind Ensemble (spring term only), College-Community Orchestra, Choir, and Women's Chorus. Four terms of participation will give you .50 units toward graduation. Six terms of a major ensemble results in one full unit. Since the additional unit is not counted in the per-semester load limit, there is no extra tuition charge for your participation, regardless of the number of credits in which you are enrolled. For some music majors, Marching Band is part of the Performance Unit requirement. M6 credit is available for non-music majors!

WHEN DO I AUDITION FOR THE MARCHING BAND?

We do not hold auditions for Marching Band & Color Guard. Any Moravian College student may participate. If you play an instrument, great! If not, we will teach you to play percussion or to work with the color guard. We also need managers to move, facilitate, and do audio work!

I AM AFRAID ABOUT MAKING THE TRANSITION FROM HIGH SCHOOL TO COLLEGE. WOULD BEING IN THE BAND HURT MY GRADES? SHOULD I WAIT A YEAR?

You should absolutely NOT wait a year! Research shows that student grades improve by staying in music. Often, students who chose to wait do not get back into it, and are sorry later. As a matter of fact, being in the band gives you instant access to a larger assortment of people who can help you with your studies! We also expect that first-year band members will have an easier time making the transition into college life since they will be on campus a week before everyone else.

I'M A COMMUTER. HOW DOES THAT WORK?

To park in the Church Street parking lot, you'll need a Moravian College parking permit for your car from Campus Security. Commuters will be fed the same as residents during Band Camp!

WHAT DOES IT COST?

Mainly hard work, maximum effort, total involvement, and enthusiasm for excellence. Attendance at the pre-season Band Camp is required. The Greyhound Marching Band & Color Guard will pick up the tab for your food. We will provide you with a uniform, grey band T-shirt, music, and an instrument if you need one. The only items that you must purchase or own are black shoes and black socks. You can order black marching band shoes through the band for \$29. See the uniform Web site (the address is in the contact section) for sizing details. However, since the Color Guard will wear unique uniforms, CG members will be contacted separately.

WHAT IS THE ATTENDANCE POLICY?

Marching band is a credit-bearing semester-long course (and your peers will grow to depend on you), attendance at Band Camp and all home football games, parades, and rehearsals until the end of the season is required.

WHEN IS THE MARCHING BAND SEASON?

Marching band season begins with the Band Camp and extends through the end of the football season in mid-November. Depending on funding, there is always the possibility of a post-season play-off performance.

WHAT SHOULD I BRING?

This is always an important question, especially for first-year students. Do not

fret, here is a list of what you need:

All of your things for the fall term.
 Alarm clock. Can't be late to morning practice!
 Mixed warm/cold weather clothes. We'll be in both sun and air conditioning.
 Poncho. It might rain.
 Sunscreen. Clouds or not, without it, you WILL get burned.
 Good pair of sneakers! (ABSOLUTELY NO SANDALS!!!)
 Your instrument. Just a friendly reminder...
 Pencils. A good musician always has a pencil to loan.
 Returning members should bring their gray marching T-shirts!
 Camera. (Optional, to immortalize those great memories!)
 A smile is REQUIRED. You will love camp!

WHAT ABOUT MOVING INTO THE DORMS?

Resident band and color guard students should check in at Foy Concert Hall on the Hurd (south) Campus. Resident students will sign out their dorm keys. Commuters should check in also. Everyone will receive copies of the Moravian College Student Handbook, the Band Camp Schedule, and locker assignments and combinations. (Yes, color guard, you, too!)

WHERE CAN MY FAMILY FIND THIS INFORMATION WHEN I'M AT MORAVIAN COLLEGE?

Point your WWW browsers to:

<http://home.moravian.edu/public/music/instrumental/band/index.htm>

HOW CAN I CALL HOME THE FIRST NIGHT OF BAND CAMP?

To make long distance calls the first night of Band Camp, you might need to call collect or use a phone card number. One of the Student Affairs Office summer mailings will include phone service start-up information.

WHO CAN I CAN I CONTACT ABOUT BAND CAMP?

James Barnes, Director: 610-861-1672

e-mail: barnesj@moravian.edu

Andrew Lynn and Jacquelyn Olimpo, Drum Majors Fall 2005 and 2006

Band Office phone numbers

610-861-1637 (voice)

610-861-1657 (FAX)

I'M ON THE RESIDENCE STAFF AND WE HAVE TRAINING DURING BAND CAMP.

Residence staff are employees at Moravian. Working this kind of a job while attending classes demands you have very good time management skills. Since much of Band Camp and Residence Staff week coincide, RAs and RDs will split their time between Band Camp and Residence Staff training, with specific times and places to be determined before Camp begins by the Head of Student Services. On Friday and Saturday, you will be giving first-year students a big Moravian College "Welcome." Consequently you will miss a good deal of the drill and music rehearsals. But because of the high standards required for Residence staffers, we expect you to keep up with the rest of the ensemble.

I WORK DURING REHEARSALS AND SATURDAYS. WHAT CAN I DO?

We know it's tough to try to change your work schedule. But start working on it NOW. Moravian's faculty and staff will be alerted to the Marching schedule for all on-campus work-study students. Your task is to make sure your job avoids Marching conflicts. Talk to us. We're very approachable. That is probably one of the reasons you're attending Moravian!

CAN MY SIGNIFICANT OTHER SIT WITH US IN THE STANDS?

We have always allowed this as long as they remember you have responsibilities to the group. Also remember they will not have the same bond with the rest of the group like you will. Why not ask them if they would be helpers for the game, like help move the pit percussion on and off the field? You could always wait until after the game to meet them and plan a "special" dinner or date just with them.

DO I NEED ANYTHING FROM LAST YEAR?

Just your grey marching T-shirt, black shoes, and black socks.

I NEED TO LEAVE EARLY FROM THE GAME OR HAVE A CONFLICT. WHAT SHOULD I DO?

Please plan ahead and let us know about the conflict, as soon as possible! Conflict/absence forms are available on the office bulletin board. Attendance is required at all rehearsals and performances; but we understand there can be instances that would be professionally beneficial to you (and Moravian) or personally important. Since we have to make special plans in these instances, you must contact a staff member about your conflict before the day of the rehearsal/game/festival/parade.

WHAT ABOUT EATING FOOD WHILE IN UNIFORM?

Beginning in fall 2005, you may purchase food and eat in your uniform. We will clean all of the uniforms mid Oct and at the end of the season. Please alert a Manager if you spill food on your uniform (you will be charged for any additionally needed cleaning). The schedule for game day is this: 10:00 AM rehearse, eat lunch, change into uniform on Main Street Campus. Walk to Steel Field. Although we stay for entire game, we do have the 3rd quarter off. We sometimes play a post-game show. Walk back to the HUB to change and put uniform back in storage.

I'M ALSO IN WOMEN'S CHORUS ON TUESDAYS. WHAT SHOULD I DO?

For the moment, Marching Band & Color Guard do not have conflicts with other ensemble rehearsal times! First year students with Tuesday night LinC 100 classes will have time to eat and get to class (Mr. B teaches one of those classes!)

I'M CONFUSED. WHO'S "REQUIRED" TO BE IN MARCHING BAND & COLOR GUARD?

Here goes! Required: All BM Music Education wind and percussion majors; all BA wind and percussion majors; all BA/Elementary Education wind and percussion majors; all BM Performance (Jazz) wind and percussion majors. Vocal BM Music Education majors must take 2 terms of a major instrumental ensemble, one of which must be Marching Band & Color Guard. The best information source is a music adviser.

DO I STILL HAVE AN INSTRUMENT LOCKER?

We try to keep locker assignments the same. But given the numbers of performers in all the ensembles, we may have to re-assign you. Don't worry, we'll give you plenty of warning. We'll have all the numbers and combinations at Band Camp check in.

music@moravian.edu

MORAVIAN COLLEGE

Music Department
[moravian home](#)
[music home](#)
[history](#)
[links](#)
[contact](#)
[music degrees](#)
[prospective students](#)
[faculty & staff](#)
[choral](#)
[instrumental](#)
[chamber ensembles](#)
[orchestra](#)
[contemp. ensemble](#)
[jazz group](#)
[marching band](#)
[pop band](#)
[wind ensemble](#)
[delta omicron](#)
[news & events](#)
[music alliance](#)
[music alumni](#)
[music institute](#)
[july jazz getaway](#)
[guitar festival](#)
[summer youth jazz camp](#)

MARCHING BAND GRADING

MORAVIAN COLLEGE MARCHING BAND & COLOR GUARD IS A CLASS, SO THE FOLLOWING APPLIES:

NON-MAJOR GRADES FOR MUS 004 (ELECTIVE)

Based on attendance and participation. Your peers depend on the sound of your instrument, the space your flag takes up, or your presence in the drill. Therefore, attendance is required at band camp, all rehearsals and performances.

If you know of a conflict before band camp begins, tell us asap so we can accommodate your absence in the drill/show/rehearsal. If you know you cannot make 2 or more games or the exhibition(s), please don't register for marching band.

For within-term conflicts, fill out an "Absence Form" posted next to the band office door and "hand" it to a band staff member.

Missing Band Camp means you won't be in marching band. Depending on staffing, we might be able to include you as a manager. (Dropping after band camp by the normal drop/add deadline won't gain you any friends, either. You will have left a hole in the drill and wasted student government-paid band camp food that could have been used for other campus projects.)

The grade on your transcript will read P for pass or NC for no credit.

After you are in any large music ensemble for FOUR (4) terms, you will automatically receive .50 units towards graduation. Large ensembles = marching band, wind ensemble, orchestra, choir, and women's chorus. After you are in any large music ensemble for SIX (6) terms, you will automatically receive another .50 units towards graduation (1 unit maximum).

Minors may use any combination of large ensembles to satisfy one of their 5 units for the music minor.

•

NON-MAJOR GRADES FOR MUS 014 (M6)

To satisfy the Aesthetic Expression (M6) unit, follow all the attendance/participation requirements of the MUS 004 listed above. PLUS you will need to write a one-page bio on one composer from the repertoire performed for each large ensemble every term you participate.

Although you will receive .50 units on your transcript after participating in 4 terms of any combination of large ensembles, you will need to participate in all 6 terms of any combination of large ensembles to receive the full M6 unit.

MUSIC MAJOR GRADES (MUS 310.X)

The above attendance requirements also apply to music majors.

Since your grade is a part of the Performance Unit (MUS 310.x) - unlike non-majors and minors - your participation in any of the large ensembles does not appear on your transcript.

A 100 point grade is 25% of the Performance Unit grade for winds and

percussion majors required to be in marching band. Unexcused absences or arriving late twice will lower your grade by 6 points.

The grade for majors not required to be in marching band is based on 100 points, but results in O (outstanding - raises your performance grade), S (satisfactory - keeps your performance grade the same), or U (unsatisfactory - reduces your performance grade).

Please consult with a music faculty member to determine your required and elective large ensembles.

music@moravian.edu

MORAVIAN COLLEGE

Music Department[moravian home](#) [music home](#) [history](#) [links](#) [contact](#)[music degrees](#)[prospective students](#)[faculty & staff](#)[choral](#)[instrumental](#)[chamber ensembles](#)[orchestra](#)[contemp. ensemble](#)[jazz group](#)[marching band](#)[pop band](#)[wind ensemble](#)[delta omicron](#)[news & events](#)[music alliance](#)[music alumni](#)[music institute](#)[july jazz getaway](#)[guitar festival](#)[summer youth jazz camp](#)

MARCHING BAND OFFICERS AND STAFF

FALL 2006 MARCHING BAND & COLOR GUARD:

Andrew Lynn and Jacquelyn Olimpo, Drum Majors
 Emily Kline, Featured Twirler
 Jan Dyckman and Rachel Beard, Head Managers
 Ashley Pizzino, Trombone-Manager; Truck Loader
 Dan Purtell, Trombone-Manager
 Marlane Linepensel, Color Guard-Manager
 Michele Lynch, Color Guard Instructor
 Rachel McCausland, Head Druline Instructor
 Kip Knauer, Quad Instructor
 Emily Gibbons, Fund Raising
 Andrew Lynn, Charlotte Guarino, Matthew Swiss, Kyle Hummel, arrangers

Woodwind Section Leader
 Trumpet Section Leader
 Low Brass Section Leader
 Jennifer Grier, Pit Section Leader

FALL 2005 MARCHING BAND & COLOR GUARD:

Andrew Lynn and Jacquelyn Olimpo, Drum Majors
 Emily Kline, Featured Twirler
 Joyce Owens, Senior Manager
 Courtney Selander, Head Manager
 Candy Geary, Manager
 Nathaniel Kirby, Arranger
 Kathryn Washer, Color Guard Instructor
 Jennie Hoose, Color Guard Instructor
 Andrew Drago, Druline Instructor
 Jennifer Kahl, WW Section Leader

FALL 2004 MARCHING BAND & COLOR GUARD:

Nicole Seaman, Drum Major
 Emily Kline, Featured Twirler
 Joyce Owens, Head Manager
 Marlane Linepensel, Manager
 Gabriella Panebianco, Manager
 Nathaniel Kirby, Arranger
 Jennifer Grier, Arranger
 Kathryn Washer, Color Guard Instructor
 Jennie Hoose, Color Guard Instructor
 Andrew Drago, Druline Instructor
 Jennifer Kahl, WW Section Leader

FALL 2003 MARCHING BAND & COLOR GUARD:

Anthony Costantino, Senior Drum Major
Nicole Seaman, Drum Major
Emily Kline, Featured Twirler
Rachael Stapleton, Band Camp Manager
Amy Neff, Manager
Joyce Owens, Manager
Laura Strattan, Manager

FALL 2002 MARCHING BAND & COLOR GUARD:

Anthony Costantino, Drum Major
Nicole Seaman, Drum Major
Rachael Stapleton, Manager

FALL 2001 MARCHING BAND & COLOR GUARD:

Anthony Costantino, Drum Major
Sarah Baer, Manager

FALL 2000 MARCHING BAND & COLOR GUARD:

Elric Kline, Senior Drum Major

FALL 1999 MARCHING SCATTER BAND:

Elric Kline, Drum Major



music@moravian.edu

MORAVIAN COLLEGE

Music Department[moravian home](#) [music home](#) [history](#) [links](#) [contact](#)[music degrees](#)[prospective students](#)[faculty & staff](#)[choral](#)[instrumental](#)[chamber ensembles](#)[orchestra](#)[contemp. ensemble](#)[jazz group](#)[marching band](#)[pop band](#)[wind ensemble](#)[delta omicron](#)[news & events](#)[music alliance](#)[music alumni](#)[music institute](#)[july jazz getaway](#)[guitar festival](#)[summer youth jazz camp](#)

UNIFORM PAGE

The Shoe Order Form (PDF) is at the bottom of this page.

Band Uniform highlights

Grey jacket with silver buttons on top makes band look bigger.

Slanted silver buttons give slender appearance. Black trousers and shoes don't exaggerate marching flaws.

Constructed of washable material (The College cleans the uniforms!)

Wear the provided gray t-shirt for hot weather; suggest long underwear for the cold.

Black shako with white plume.

Provided by Moravian College Marching Band

Gray band T-shirt for under uniform jacket (not shown). This replaces the student-provided white T-shirt!

White gloves and gauntlets

Insignia Marching Jacket

Black bibbers

Provided by student

BLACK socks and shoes. (\$29 Black Dinkle Vanguards may be ordered through the Band. See the Uniform Size Form below.)

Optional (not according to some!): Long underwear for that last game!

Color Guard: Shoes and outfits provided.

Featured Majorette uniform provided.

[Download Shoe Order Form](#) (Adobe PDF File)



music@moravian.edu

MORAVIAN COLLEGE

Music Department

moravian home music home history links contact

music degrees

prospective students

faculty & staff

choral

instrumental

chamber ensembles

orchestra

contemp. ensemble

jazz group

marching band

pop band

wind ensemble

delta omicron

news & events

music alliance

music alumni

music institute

july jazz getaway

guitar festival

summer youth jazz camp

MARCHING TECHNIQUES

THE BASIC MARCHING SKILLS

At Rest

"Band - (pause) - At Rest"

Feet: Shoulder width

Hands: Left over right in front of body

Head: Bent forward.

Mind: Think of the best marcher in PA. Then be that marcher.

Attention

"Band - (pause) - Atten-tion!" Response: "(and) Hut!"

Feet are "Together"

Stomach is "In"

Chest is "Out"

Shoulders are "Back"

Chin is "Up"

Eyes are "With Pride"

Mark Time

"Mark - time - hup (- hup)"

On the last unspoken hup left knee pops forward

The heel rises about 2"

The toes & balls of feet stay on ground.

As Left heel returns to ground, the right knee pops forward.

Halt

"Band - (pause) - Halt - one - two"

On One, the Right heel lands and stays down.

On Two, the Left heel lands and stays down.

GLIDE STEP

Begin by thinking of this process in four 16ths.

As you begin to understand the steps, chunk

the 4 steps into 2 parts like eighth notes.

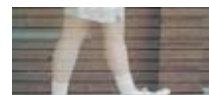
Eventually, you will think in beats, not steps.

This is a motor skill and requires revisiting EVERY session.

Start in the Attention position:

"One" (also: "Toe")

Move Left foot first and lean forward.



Touch heel to ground in front of you.
Extend your Left toe up.



"e" (also: "Knees")

Keep ball of Right foot on the ground.
Bend Right knee to meet left knee.



"and" (also: "Ankles")

Swing Right foot ankle to Left foot ankle.
Avoid touching the ground with your Right foot.



"a" (also: "Lock")

Lock Right knee.
Swing extend Right foot forward with toe
up.
Remember, your Right heel doesn't
touch until "One".



music@moravian.edu

Moravian College Marching Band & Color Guard

Constitution

Preamble

The Moravian College Marching Band & Color Guard endeavors to promote the growth of self-discipline, self-respect, self-motivation, and self-awareness by challenging the individual through music, movement, rehearsals, and performances at the College and in the wider community.

Article I: Name

Moravian College Marching Band & Color Guard: “The Greyhound Marching Band”

Article II: Officers

Section I:

The Officer Staff of the MCMB&CG shall consist of: 1. Drum Major(s), 2. Second Drum Major, 3. Senior Manager, 4. Manager(s), 5. Featured Twirler, 6. Arranger(s), 7. Color Guard Instructor, 8. Drumline Instructor, 9. Section Leaders, and 9. Director of Instrumental Music

Section II:

1. The Second Drum Major shall be elected from the rising sophomore class by the graduating Drum Major and the Director of Instrumental Music after consulting with the Senior Manager, Manager(s) and Featured Twirler at the end of the fall semester for a period of one year.
2. The Second Drum Major shall, after one year, assume the role of Drum Major for a period of 2 more years. During the first of the two years, there shall generally be no Second Drum Major. During the second of the two years, a new Second Drum Major shall be nominated by the Officer Staff and elected.
3. Managers and Section Leaders shall be nominated by any member of the MCMB&CG or by self-nomination. Managers shall be voted into office by the current members of the Officer Staff. The Senior Manager must have been in the MCMB&CG for at least one season.
4. The Featured Twirler, Color Guard Instructor, and Drumline Instructor shall be appointed by the Drum Major (and Second Drum Major) after consulting with the Director of Instrumental Music.
5. The Director of Instrumental Music is appointed by the College.

Section III:

1. It shall be the duty of the Officer Staff to explain the nomination/election procedures to the MCMB&CG.

2. Any member may make a nomination to the Officer Staff.

Section IV:

1. A vacant office shall be filled at a special session of the Officer Staff. In the event that a replacement cannot be elected, the Drum Major and Director of Instrumental Music shall have power to make a temporary appointment to the vacant office. The temporary appointment shall not be valid no longer than the tenure of the current officers.

Article III. Duties of the Officers

Section I: Drum Major

1. Directs all performances of the MCMB&CG.
2. Runs the rehearsals of the band after consultation with the Director.
3. Serves as the public representative of the MCMB &CG.
4. Collaborates with the Director to keep the social and psychological natures of the band in balance.

Section II: Second Drum Major

1. Assists the Drum Major in those duties.
2. Attends a "Director's Camp" the summer after being elected.
3. Reports personnel, musical, and social issues to the Officer Staff.

Section III: Senior Manager

1. Is responsible for the logistics of the band.
2. Trains and guides the Manager(s).
3. Reports personnel, musical, and social issues to the Officer Staff.

Section IV: Manager(s)

1. Assists the Senior Manager in all logistics of the band program.
2. Reports personnel, musical, and social issues to the Officer Staff.

Section V: Featured Twirler

1. Choreographs the routines in conjunction with the Drum Major, Second Drum Major, Color Guard Instructor, and Director.
2. Arranges for a uniform to be made.
3. Reports personnel, musical, and social issues to the Officer Staff.

Section VI: Arranger(s)

1. Writes arrangements of music in the spring term for the following fall.
2. Works with the Director of Instrumental Music to rework drafts.

Section VII: Color Guard Instructor

1. Choreographs the Color Guard routines.
2. Teaches and cleans the CG routines during band camp and the season.
3. Reports personnel, musical, and social issues to the Officer Staff.

Section VIII: Drumline Instructor

1. Sees that the drumline and Pit members maintain their instruments.
2. Helps clean drill within the drumline.
3. Assists with show music preparation and street beat(s).
4. Reports personnel, musical, and social issues to the Officer Staff.

Section IX: Section Leaders

1. Sees that their section members maintain their instruments.
2. Helps clean drill within their section.
3. Assists with music preparation.
4. Reports personnel, musical, and social issues to the Officer Staff.

Section X: Director of Instrumental Music

1. Keeps the direction of the organization in line with the goals and initiatives of Moravian College.
2. Collaborates with the Drum Major on the preparation of music, drill, schedule, and performances.
3. Collaborates with the Drum Major to keep the social and psychological natures of the band in balance.
4. Maintains the budget in conjunction with the Officer Staff.

Article IV: Membership

Section I: All Moravian College students, faculty, and staff, as well as community members shall be eligible to participate without audition.

Section II: Members with or without instrumental experience shall be assigned an instrument or Color Guard placement by the Officer Staff.

Section III: Students with prior experience may request a different instrument or Color Guard assignment.

Section IV: Moravian College students must enroll for elective credit, M6 LinC credit, or as part of the music major's performance unit. A half unit of elective credit is automatically added to a student's transcript after 4 terms of MCMB&CG and/or Choir, Wind Ensemble, Women's Chorus, or Basketball Pep Band. A full elective or M6 unit is added after 6 terms. For M6 credit, the student must also write one one-page program note on one composer studied in each of the six terms of ensemble. The added credit does not count in a student's normal 4.5 unit per semester load.

Section V: All members shall review performance tapes and complete self- and ensemble-assessments.

Article V: Rehearsals

- Section I: There shall be a band camp prior to and/or soon after the commencement of fall classes.
- Section II: There shall be two two-hour rehearsals per week. An additional 1.5 hour rehearsal is scheduled the morning of game days.

Article VI: Performances

- Section I: The MCMB&CG will perform at all home football games, the Homecoming Parade and the Bethlehem Parade.
- Section II: The MCMB&CG will perform in exhibition at 1-2 high school marching festivals.
- Section III: Given budgets and College requests, the MCMB&CG shall perform at special College functions during the football season.
- Section IV: The MCMB&CG may perform at events not in the regular football season only on a volunteer basis.
- Section V: Performance suggestions shall be accepted from any member of the MCMB&CG at any time or during meetings specifically held to select music.
- Section VI: Approval of performance suggestions shall be made by the Officer Staff.

Article VI: Amendments

- Section I: Any part of this Constitution can be amended with the consent of the Officer Staff after taking into account the goals and initiatives of Moravian College.